



**IMPALA** International Multidisciplinary  
Programme to Address  
Lung Health & TB in Africa

**NHS**  
*National Institute for  
Health Research*

**LSTM**  
LIVERPOOL SCHOOL  
OF TROPICAL MEDICINE



---

## THE VITAL ROLE OF RESEARCH FOR TUBERCULOSIS ELIMINATION: IMPORTANCE, PRIORITIES AND CHALLENGES OF APPLIED HEALTH RESEARCH

**Dr. Ayakaka Irene**

**Makerere Lung Institute; Uganda TB Implementation Research Consortium, Kampala  
Uganda**

TAG, STOP-TB and WHO Research summit briefing for UN missions.

June 4, 2018

New York

---



## DEVELOPING AND SETTING A LOCAL AGENDA FOR APPLIED RESEARCH

Applied research aims for a better fit between intervention and **local context**



- social, cultural, economic, political, institutional, environmental influences on human behavior

• Image source: <http://www.factual.com/>



## CHALLENGES OF APPLIED HEALTH RESEARCH

### 1. What should we do with our ‘evidence’

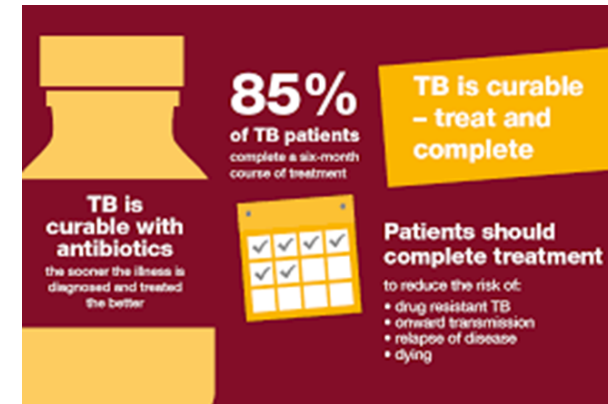
*“Many evidence-based innovations fail to produce results when transferred to communities in the global south, largely because their implementation is untested, unsuitable or incomplete”* (T. Madon et al .2007)



### 3. Resource challenges

- Finances
- Human resource

### 2. Often we know what is and what to do ....



.....but not how to get it done



## PRIORITIES

### CONTEXT SPECIFIC SOLUTIONS

Developing effective, **context-sensitive** solutions requires shifting from a **deficit** model



to understanding and building on community **knowledge** and **strengths**

### LISTENING TO FRONT-LINE STAKEHOLDERS TO PRIORITIZE RESEARCH

The incorporation of the service users' values, preferences and priorities is an important part of applied health research

*(Lomas J: 2003)*

Promotes acceptance, use and sustainability as well as ensuring equity (Some commentators will argue that it is as important as the science)



## LISTENING TO FRONT LINE STAKEHOLDERS TO IMPROVE HOME-BASED TB CONTACT INVESTIGATION— UGANDA TUBERCULOSIS IMPLEMENTATION RESEARCH CONSORTIUM (MHEALTH STUDY)

**Drop-out from the tuberculosis contact investigation cascade in a routine public health setting in urban Uganda: A prospective, multi-center study**

**Brief Report: “Give Me Some Time” Facilitators of and Barriers to Uptake of Home-Based HIV Testing During Household Contact Investigation for Tuberculosis in Kampala, Uganda**  
Armstrong-Hough, Mari *et al*

RESEARCH

Open Access



Identifying barriers to and facilitators of tuberculosis contact investigation in Kampala, Uganda: a behavioral approach

Irene Ayakaka<sup>1</sup>, Sara Ackerman<sup>2</sup>, Joseph M. Ggita<sup>3</sup>, Phoebe Kajubi<sup>4</sup>, David Dowdy<sup>5</sup>, Jessica E. Haberer<sup>5</sup>, Elizabeth Fai<sup>6</sup>, Philip Hopewell<sup>6</sup>, Margaret A. Handley<sup>7,8</sup>, Adithya Cattamanah<sup>9</sup>, Achilles Katamba<sup>9</sup> and J. Lucian Davis<sup>10\*</sup>

The incorporation of the service users' values, preferences and priorities is an important part of applied health research

*(Lomas J: 2003)*



## PRIORITIES: RESEARCH TO UNDERSTAND THE LOCAL CONTEXT



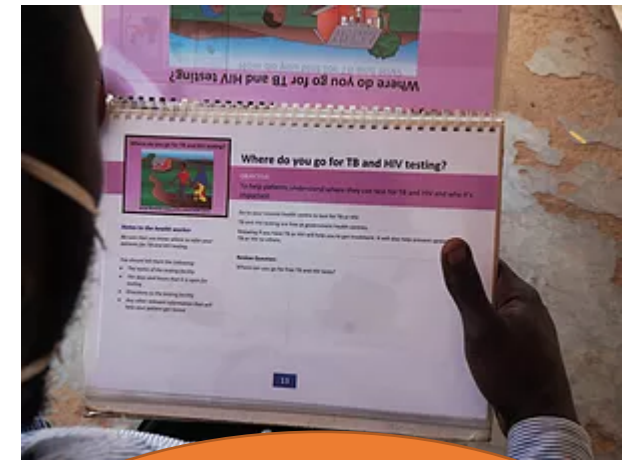
### Community Engagement

We carry out our research in partnership with local communities.



### Patient-Centeredness

We prioritize work that considers issues that are important to patients.



### Applied health research and implementation science

We prioritize the study of processes and outcomes that are important to patients.



## PRIORITY : FINANCING FOR SUSTAINABILITY

### Financing

- Cross-cutting for all priorities
- To improve availability of local resources (mentorship, training, HR)
- Long term-agenda development (HS as opposed to project mode)



## RECOMMENDATIONS

- Develop a local agenda for applied health research
- Community ownership
- Capacity building
- Financing
- Accountability to the community





## CURRENTLY

- The influence of communication with different providers around tuberculosis (TB) and chronic respiratory disease on patients' experience of and response to their illness and how this could be improved (PhD)
- Practice and policy context for communication around TB and chronic respiratory diseases in Uganda
- TEACH Study – Tuberculosis Education and Counseling (Uganda and Kwa-Zulu Natal, SA)



## REFERENCES

1. Armstrong-Hough M, Ggita J, Ayakaka I, Dowdy D, Cattamanchi A, Haberer JE, Katamba A, Davis JL. "Give Me Some Time": Facilitators of and Barriers to Uptake of Home-based HIV Testing During Household Contact Investigation for Tuberculosis in Kampala, Uganda. *J Acquir Immune Defic Syndr*. 2018. PMID: 29300218.
2. Armstrong-Hough M, Ggita J, Turimumahoro P, Meyer A, Ochom E, Katamba A, Davis JL. Uptake of home-initiated tuberculosis evaluation during household contact investigation in Kampala, Uganda: A mixed-methods study. *PeerJ Preprints*. 2017;5:e3384v1.
3. Ayakaka I, Ackerman S, Ggita JM, Kajubi P, Dowdy D, Haberer JE, Fair E, Hopewell P, Handley MA, Cattamanchi A, Katamba A, Davis JL. Identifying barriers to and facilitators of tuberculosis contact investigation in Kampala, Uganda: a behavioral approach. *Implementation science : IS*. 2017;12(1):33. PMID: 28274245; PMCID: 5343292.
4. Armstrong-Hough M, Turimumahoro P, Meyer AJ, Ochom E, Babirye D, Ayakaka I, Mark D, Ggita J, Cattamanchi A, Dowdy D, Mugabe F, Fair E, Haberer JE, Katamba A, Davis JL. Drop-out from the tuberculosis contact investigation cascade in a routine public health setting in urban Uganda: A prospective, multi-center study. *PLoS One*. 2017;12(11):e0187145. PMID: 29108007; PMCID: PMC5673209.
5. Shete PB, Nalugwa T, Farr K, Ojok C, Nantale M, Howlett P, Haguma P, Ochom E, Mugabe F, Joloba M, Chaisson LH, Dowdy DW, Moore D, Davis JL, Katamba A, Cattamanchi A. Feasibility of a streamlined tuberculosis diagnosis and treatment initiation strategy. *Int J Tuberc Lung Dis*. 2017;21(7):746-52.
6. Lomas J, Fulop N, Gagnon D, Allen P. On Being a Good Listener: Setting Priorities for Applied Health Services Research. *The Milbank Quarterly*. 2003;81(3):363-388. doi:10.1111/1468-0009.t01-1-00060.



## ACKNOWLEDGEMENTS



### UGANDA TB IMPLEMENTATION RESEARCH CONSORTIUM

<http://utbspwebsite.wixsite.com/u-tirc>

**FORGATY INTERNATIONAL - PART TRAINING  
PROGRAM (Makerere College of Health Sciences, Uganda)**